

1/21 robinson

Table of Contents

- | [Property Details](#)
- | [Photo Gallery](#)
- | [Map](#)
- | [Contact For Inspection](#)

Property Details

1/21-23 Robinson Avenue, EAST LISMORE



GIRARDS HILL UNIT

2 1 1

Elevated position in Girards Hill, this brick and tile unit is set amongst the trees with an elevated outlook over the golf course of East Lismore. The small complex of 4 units is located in a quiet street within close proximity to shopping centre, St Vincents Hospital and golf course

The unit features an open plan living which takes in the golf course views, 2 bedrooms both with built-ins plus large storage area underneath the unit. There's also a single carport space designated for the unit.

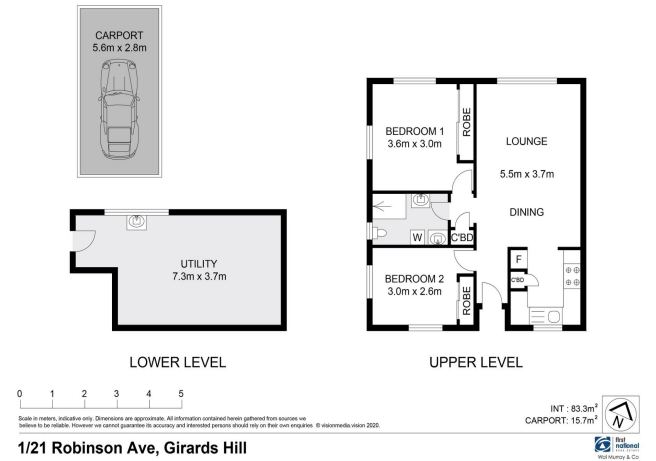
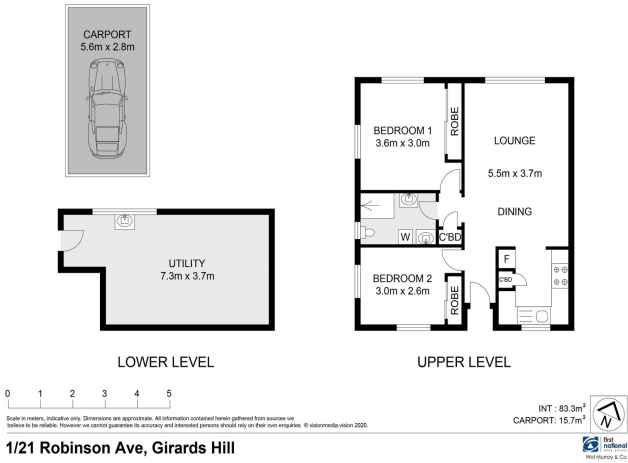
Ready for the next buyer to add their own touch, this unit is affordable and will suit many buyers. Currently vacant ready to move into our rent out.

- 2 Bedrooms
- 1 Bathroom
- 1 Carport
- Built In Robes

\$239,000

Photo Gallery





Map



Contact For Inspection



BENJAMIN CONTE

LICENSED REAL ESTATE AGENT

0408 368 913

ben@walmurray.com.au